



纽恩泰ENERGY

2022

社会责任报告

1

4

" " 2010

" "

CNAS SGS Intertek Kiwa

10

" "

20

2022

20

9 2023

1

" "



25

100

3X

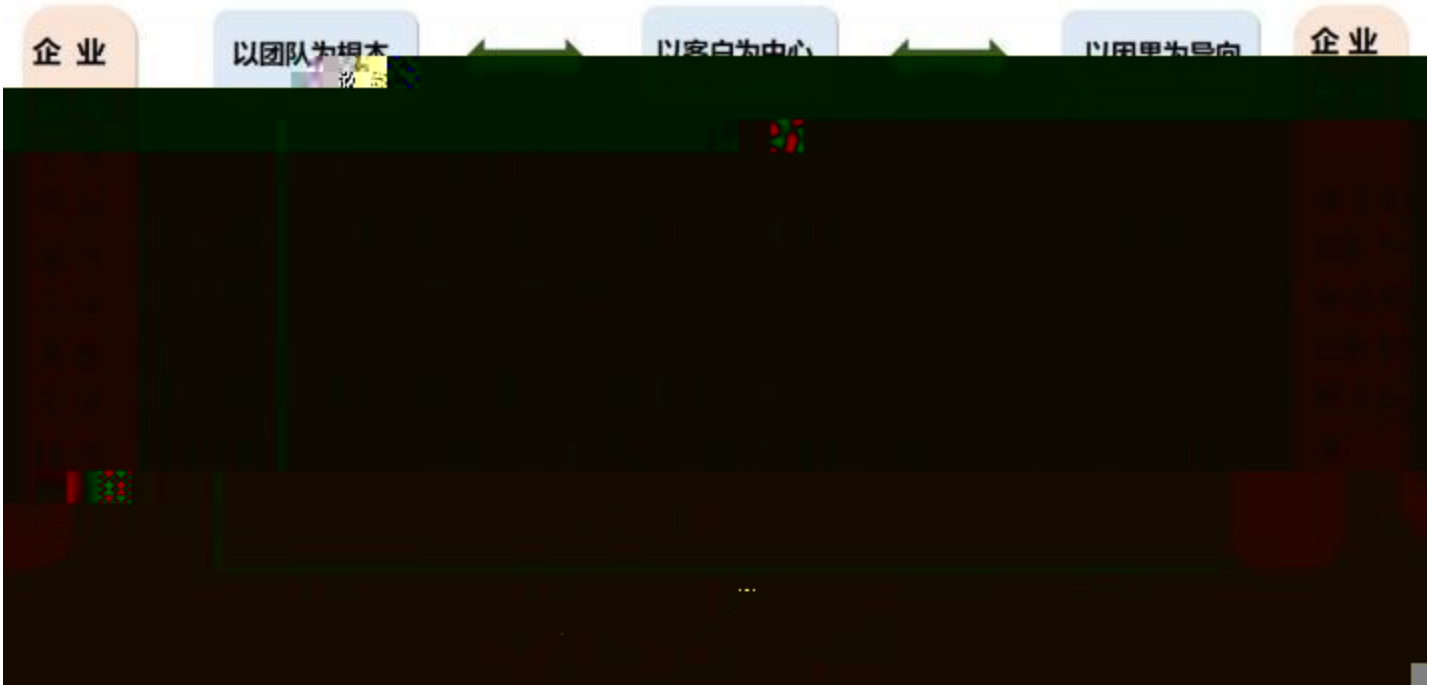
WIFI

Smart

“ ”

“ ”

1.1



" " " "

" "

" "

" "

" " — —

1 qY@D7•

2 0 [»

3

7

8

1

0

9

10

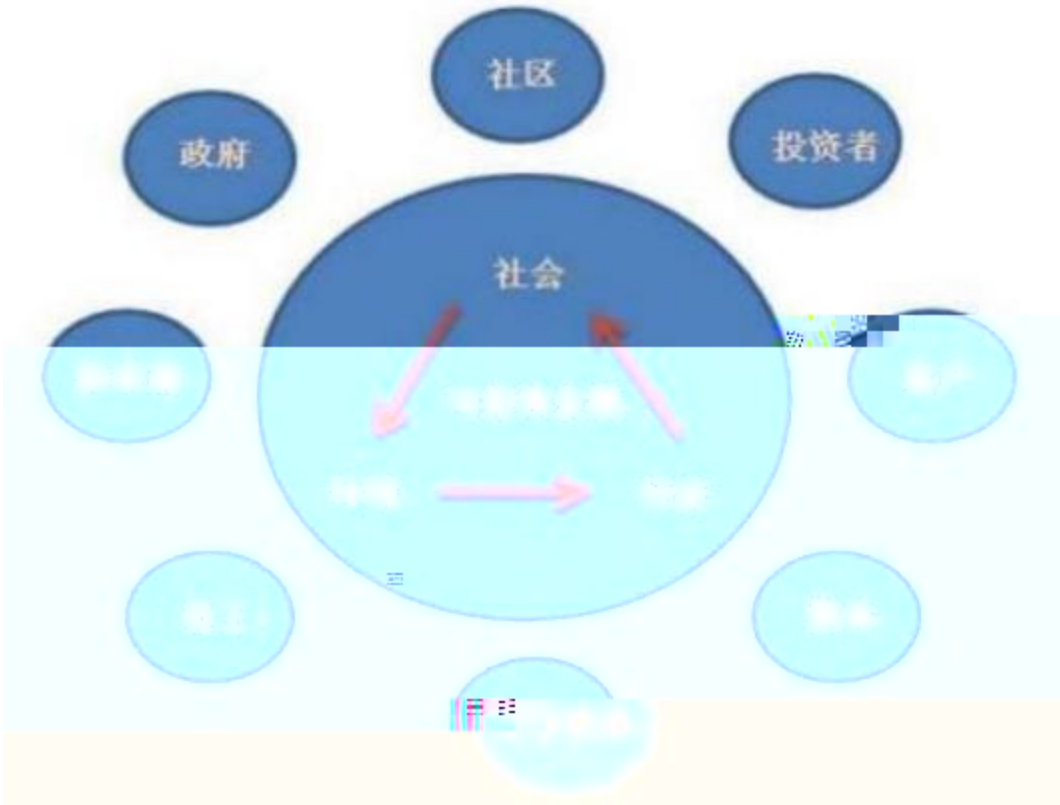
11

12

13

14

€



1.3

5

2022	2022 10	
" "	2022 7	
2022 -	2022 7	
2021	2021 12	
	2021 10	
2021	2021 10	
2021 -	2021 10	
2020	2020 7	
	2020 3	
	2019 12	
	2019 12	
	2019 8	
2019 "	" 2019 7	
2020 "	" 2019 3	
2019	2019 3	
	2018 10	
	2018 6	
2018	2018 3	

1			-	
3	--		2018	
4			-	
5			-	
6		/		
7		/		
8	" "			

1.4

1.4.1

			100%
			100%
	/		100%
			100%
			100%
			100%
5 OA	1 / 2		
6			

7		12 5000	
8			
9			
			100%
			50%
			50%

1 " " — —

2 " " — —

3

4

"

"

1.4.2

	1		/	
	2		/	
	3	()	
	4			
	5			1
	1			
	2			
	3	4		
	5			
			/	

1.4.3

1

" "

2

3

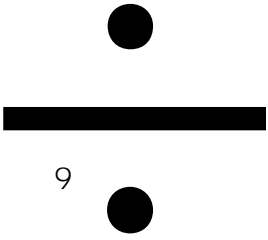
a)

4

a)

b)

5



2021

3.06

5300

7

9

! " # \$ % & ' () * + , - . / : ; < = > ? @ [\] ^ _ ` { | } ~

6 7 8 9

2022

200+

1000+

1

		ZL 2010 2 0660108.0	
		ZL 2016 3 0154255.3	
		ZL 2013 2 0892265.8	
		ZL 2013 2 0835766.2	
		ZL 2013 2 0835758.8	
		ZL 2011 2 0080594.3	
		ZL 2011 2 0528062.1	
		ZL 2011 2 0527727.7	
		ZL 2010 2 0660110.8	
10		ZL 2014 2 0298018.X	
11		ZL 2012 2 0034683.9	
		ZL 2012 2 0034627.5	
		ZL 2011 2	
	0532027.7		
		ZL 2012 2 0036005.6	
15		ZL 2016 2 0321096.6	
1	18		
2	18		
3	2015		
4			
5	2017	"	"
6	2016	"	"
7	2012-2020		
8	2017		
9	2014		
10			
11			
12			
13			
14			
15		AAA	
16		AAA	
17			

	18
	19

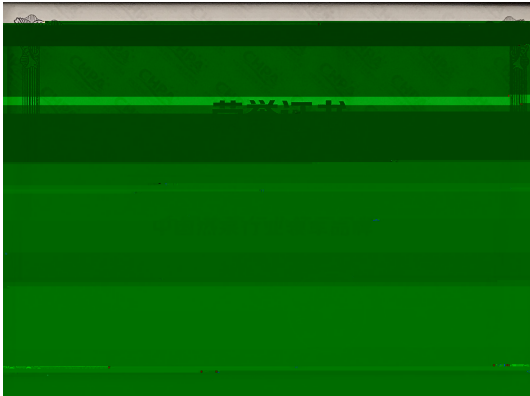
1











2.3

2.3.1

"	"				
	3000+	10000+	10+	100+	
400		24	2		
12		24	48	6S	

2.3.1.1

"	"				
	CRM				
			9		
"		"		"	"
19				"	
		"	4		



2.3.1.2

2019

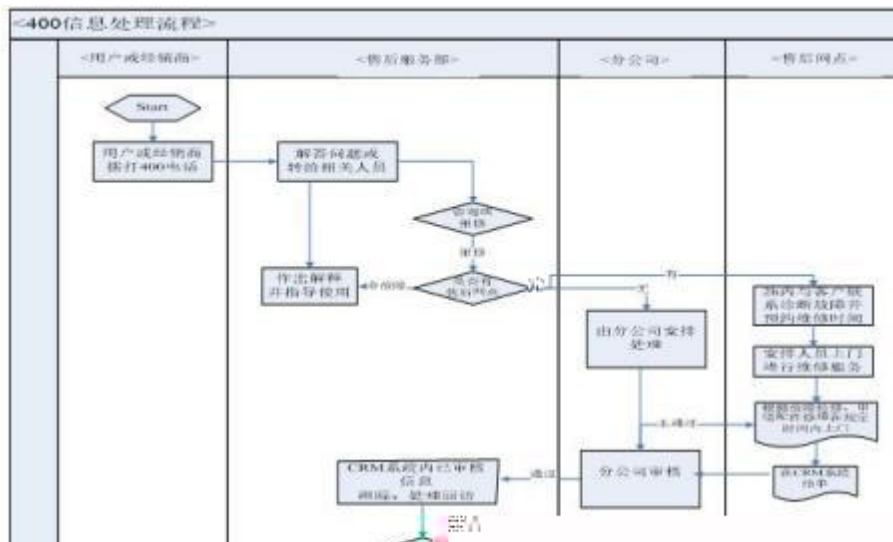
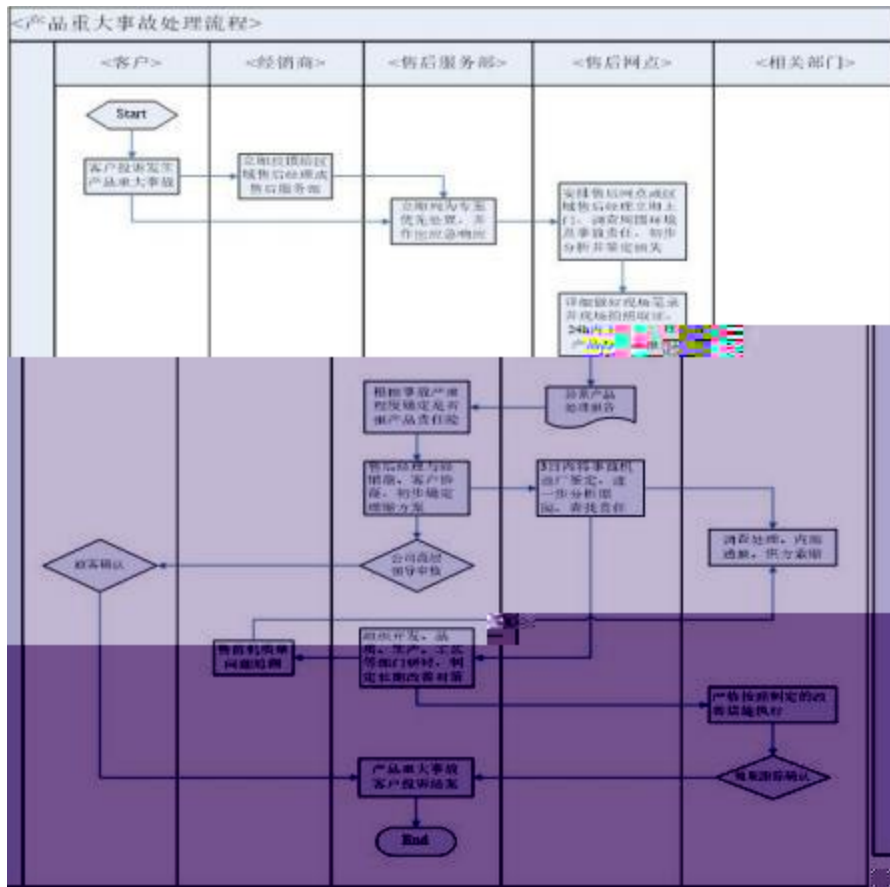




2.3.1.3

2

24 1 400 2 12
 48 3000



2.3.1.4

IT

18

"

"

客户的表扬信

感谢信

致广东恒泰新能源科技发展有限公司：

河北“赵县”气源热泵供热改造项目“2019-2020”采暖季竣工验收，目前项目运行效果良好，各项技术指标均达到了预期设计标准，改造后的供暖效果得到了当地百姓以及政府的认可！项目安全稳定的落地离不开恒泰团队付出的贡献，在此真诚的感谢贵单位的辛勤付出！

此项目要求两个月内完成438万平方的供暖改造工作，时间紧，任务重，涉及热源改造、输配管网改造等多个专业及阶段的交叉、平行作业，贵司提前筹备，不仅按时保质交付1200台自建的土制设备，还建立了专门应对赵县项目的优秀技术团队，他们不畏艰辛，日以继夜连续奋斗的服务精神令我们感动，贵司的专业服务和优质产品在保障了赵县3.5万产居民的采暖采暖的正常运行，也为贵司赢得了良好口碑。

再次感谢赵县董事长及为赵县项目付出的恒泰团队成员！希望以后能有更多项目和贵司深入合作！

此致
商祺！

董事长
中机国能能源热力有限公司
2020年9月28日



2.3.2

1

1

2

TTT

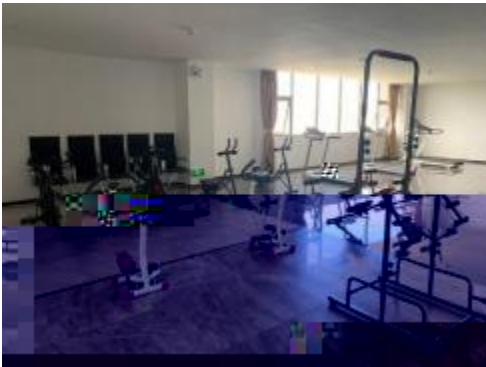
3

" "

3



4



5

(二) 公益使命



1



24

2

2020



40

2 10

100%



2 13

42

2020

2 13

200



"

"



3

“ ”

“ ”



5 12 -6 6 - ” ”

“ ”

”



" " 8 1000 " "

" "

29



4

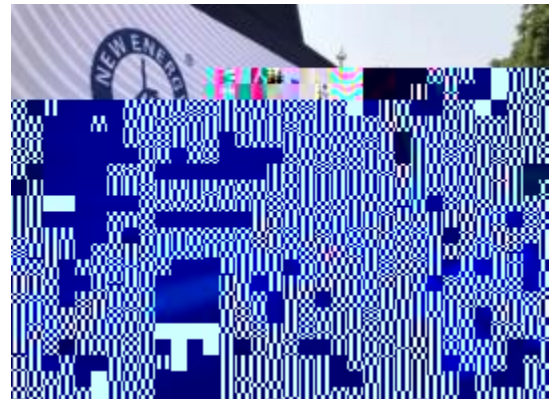
"

"

18

18

36



2018

18

— — GBK
1000

"

"

"

"

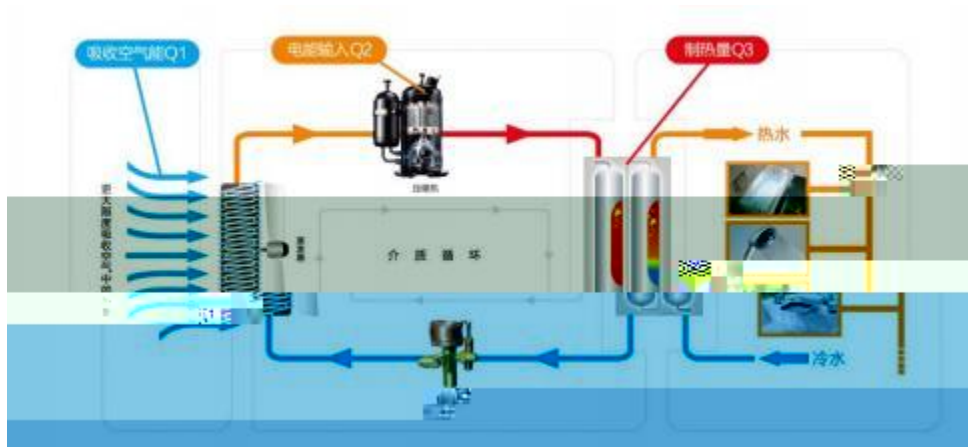
2019 8 29

2022 2

2022



20 55 /
400%



空气源热泵循环原理图

Q1 Q2

$$Q3 = Q2(\quad) + Q1$$

$$COP = Q3 / Q2$$

2000 1

2 3

4 5

6

2016

-20°C

-35°C

2012

2016

26+2

-35°C

43°C

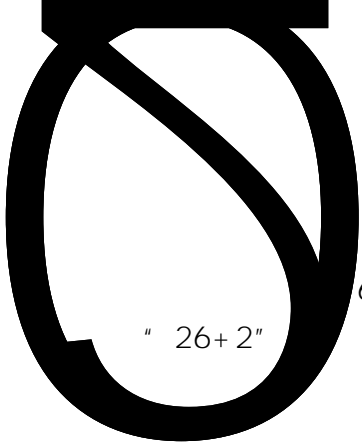
0°

C

1
4000

150

3%



2

6

" 26+ 2"

400 /

+

50

1.5

10000

2017

2016

6600

2016

3

2017

2018

64

G52KD

2018

2020

2019

1200 60

900

CO2

SO2

4

/

2020

2009

1638

2009
EurObserv

5

6

2016

2019

400

1200 60

		2018 6	
		2018 10	
		2019 8	
		2019 12	
		2019 12	
		2020 3	
2018		2018 3	
2019		2019 3	
2020		2020 7	
2020	" "	2019 3	
2019	" "	2019 7	
2021		2021 10	
		2021 10	
2021		2021 10	
	" "	2021 12	
2021		2021 12	
2022	-	2022 7	
	" "	2022 7	
2022		2022 10	

"

"

"

"

"

"